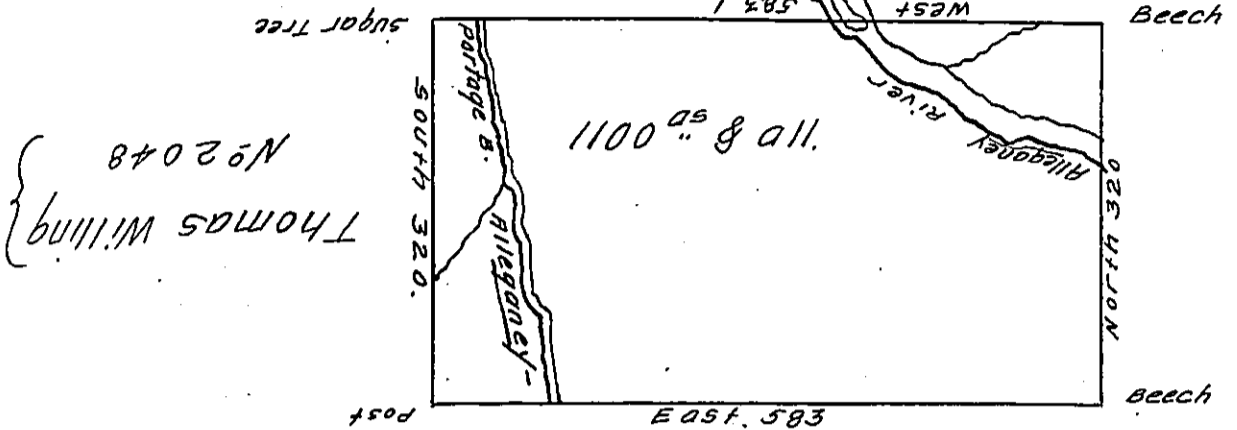


No 60

Strawbridges Land



No 1357

Situate on the Allegheny River and Portage Branch of the Allegheny about one half Mile South of the Canoe place Northumberland County. containing 1100 Ares and the Usual Allowance for Roads, &c. Surveyed (obl.) 10<sup>th</sup> 1793 for Robert Blackwell in persuance of a Warrant bearing date the 27 day of April 1792.

John Canan D. S.

Daniel Brodhead Esq. S. G.

IN TESTIMONY that the above is a copy of the original remaining on file in the Department of Internal Affairs of Pennsylvania, made conformably to an Act of Assembly approved the 16th day of February, 1833, I have hereunto set my Hand and caused the Seal of said Department to be affixed at Harrisburg, this twenty fourth day of January 1911.

*Henry Houck*

Secretary of Internal Affairs.